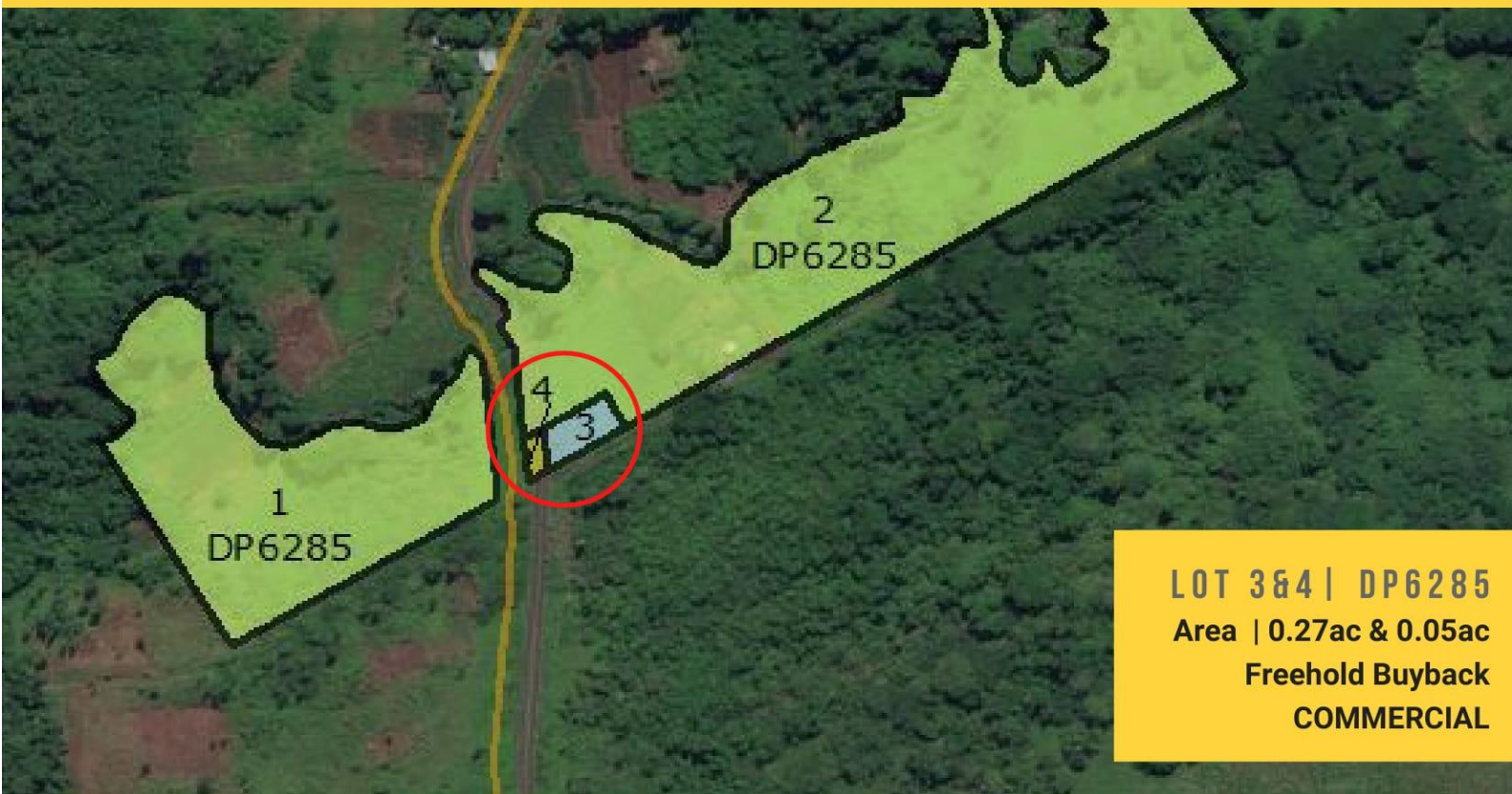


LAND BANK

MINISTRY OF LANDS & MINERAL RESOURCES



VUNIVESI SUBDIVISION | TAILEVU APPLICATION TO LEASE



LOT 3&4 | DP6285
Area | 0.27ac & 0.05ac
Freehold Buyback
COMMERCIAL

DESCRIPTION

This commercial property has the potential to transform and cater to the growing Dawasamu area.

Located along Dawasamu Road, neighbouring Naitaleira village, Tailevu - the property is part of Vunivesi Subdivision offering access to the beach, basic utilities and nearby services.

Applications are accepted for the lease and development of the lot described.

A designation under the Landuse Act 2010

Please apply online or access forms on the Ministry website under the Publications tab on www.lands.gov.fj

Any hardcopy submissions are to be addressed to the Director Land Use and delivered at Block A, LUD, Berkeley Crescent or posted to P.O. Box 2222, Government Buildings, Suva - no later than 30 days of this publication.

Late or incomplete applications will not be considered.

For further inquiries or assistance please contact the Marketing Unit on 3239854


Ir Irena Nayacalevu
Director Lands